

# APQA

## ANIMAL AND PLANT QUARANTINE AGENCY

Animal and Plant Quarantine Agency (APQA) pursues systemic and field-oriented policies that contribute to make Korea a disease-free country where the people can enjoy prosperity



# **Procedures for Plant Quarantine & Import Permit of Korea**



◆ Department of Plant Quarantine/Animal and Plant Quarantine Agency(APQA)



# **Contents**

## **1. Introduction of APQA**

## **2. Regal Basic for Plant Quarantine**

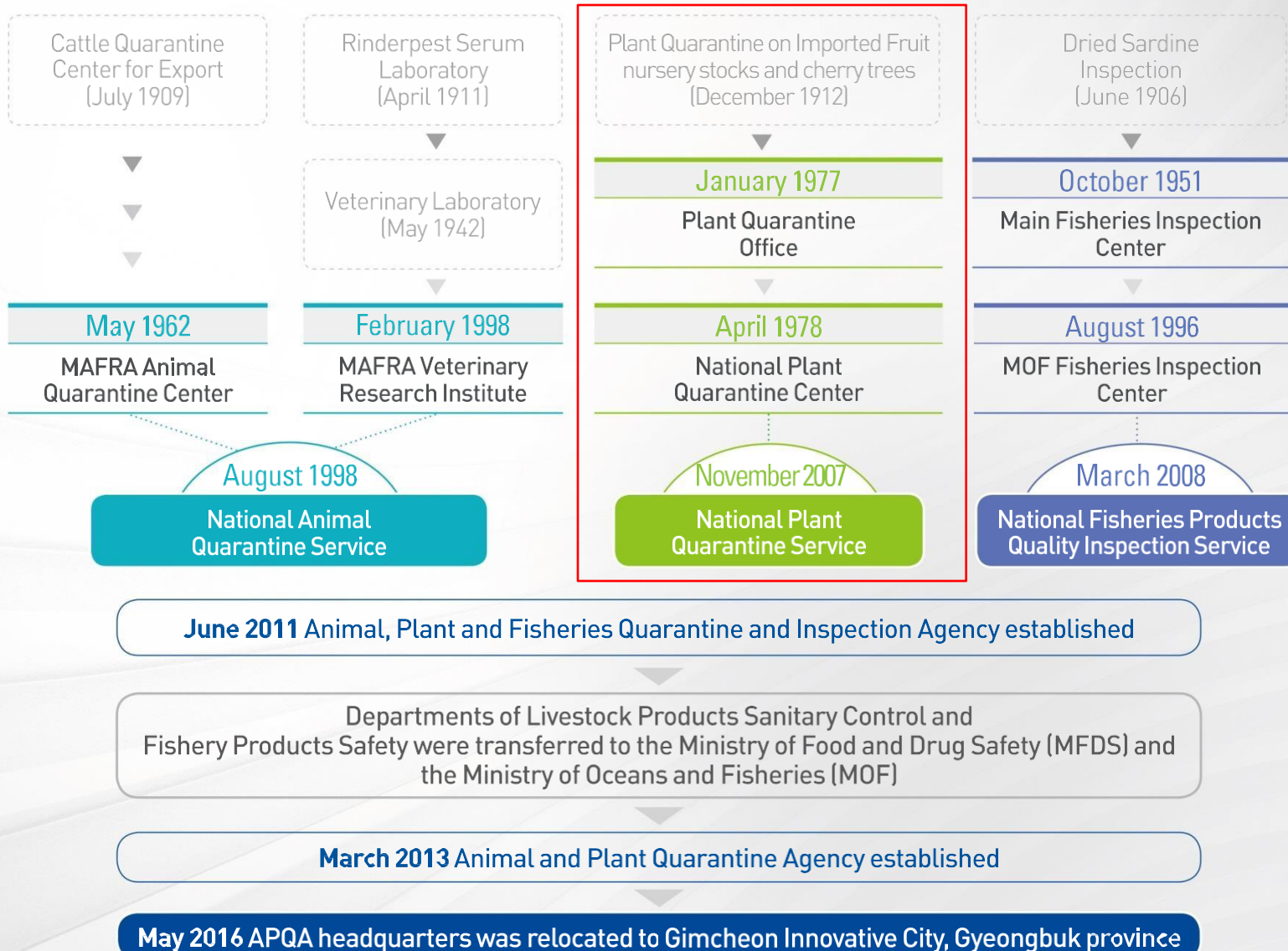
## **3. Plant Quarantine – Import Inspection**

## **4. Import Risk Analysis(IRA)**

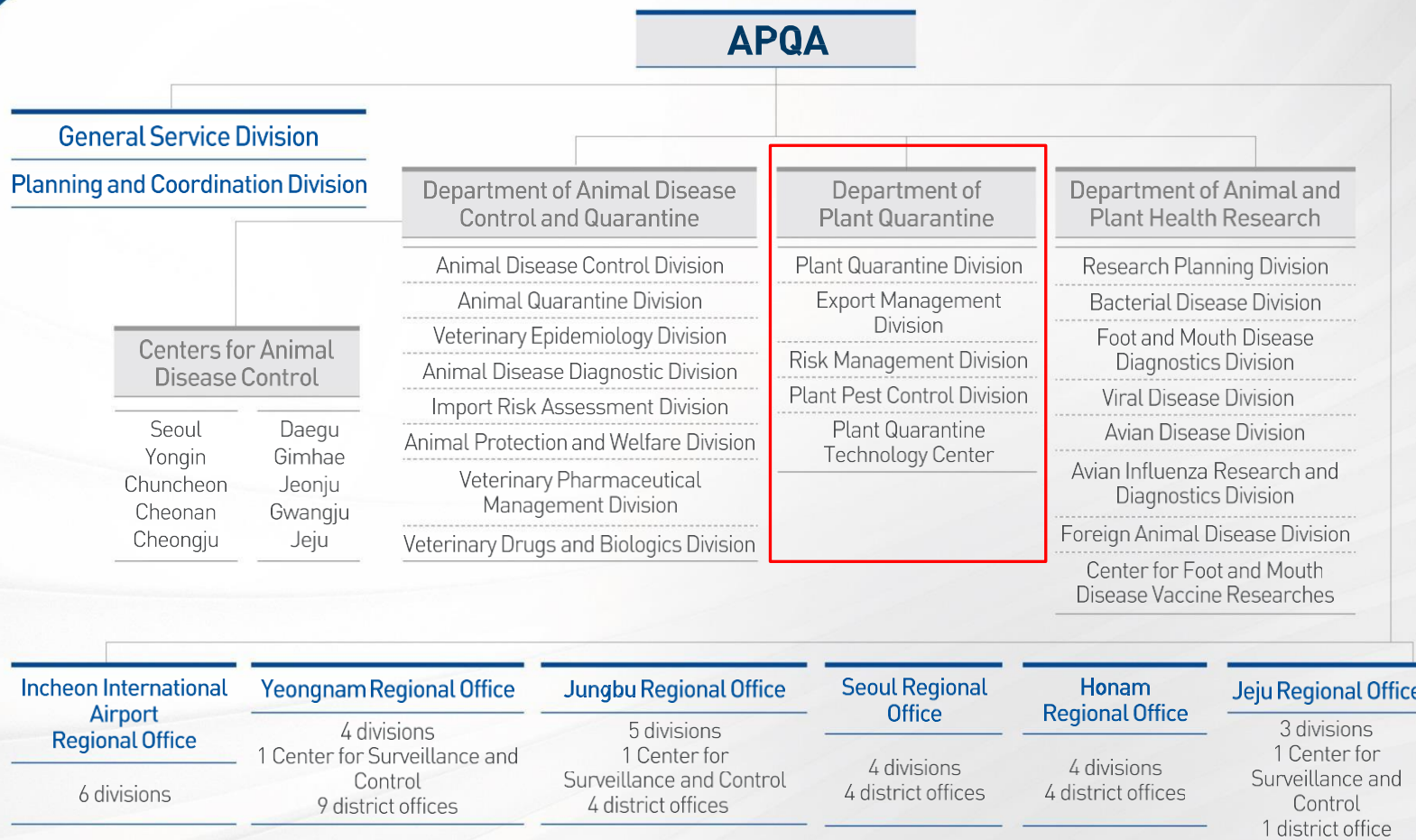
# **1. Introduction of APQA**

---

# 01 History



# 02-1 Organizational Chart



## 02-2

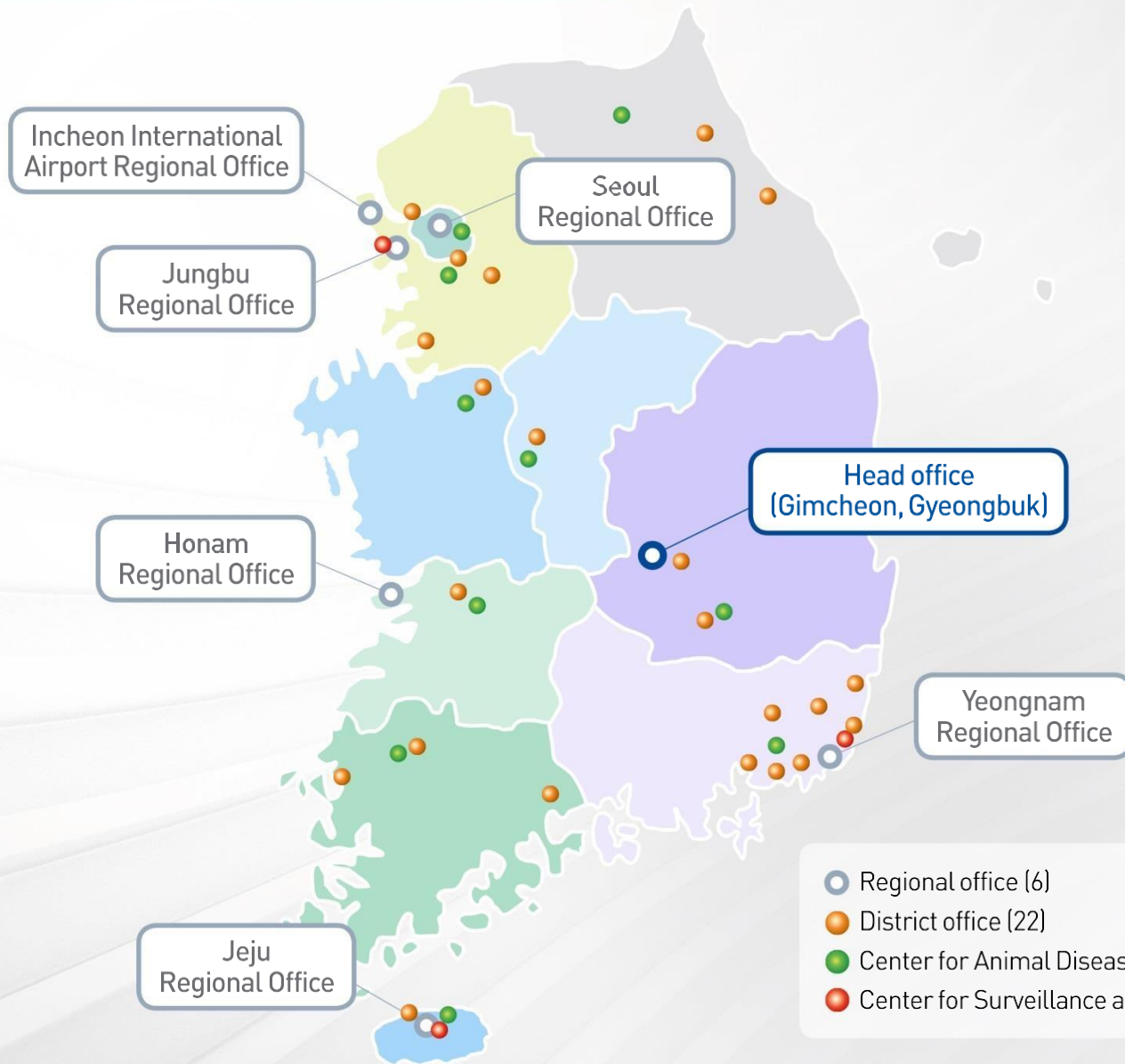
### Personnel (1,111 in total)

(Unit : person)

Senior Executive	GR3-GR4	GR4	GR4-GR5	GR5	GR6	GR7	GR8-	Senior Researchers	Advisory Service	Veterinary Researchers	Management & Operation Service	Specialist
6	3	29	10	113	284	347	156	38	1	80	9	35

# 03-1 Locations

Animal and  
Plant  
Quarantine  
Agency





## **2. Regal Basis for Plant Quarantine**

---





## □ Regal Basis for Plant Quarantine in Korea



**Plant Protection Act**  
**Enforcement Ordinance (1),**  
**Enforcement Regulation (1),**  
**Notifications (114),**  
**Established rules (16),**  
**Official Orders (1)**

### The purpose of the Act

**To contribute to the security and promotion of agricultural and forest production, and to protect natural environment**

### Including..

- Quarantine of imported, exported & domestic plants
- Control of pests inflicting harms to plants
- Exotic pest monitoring, epidemiological survey



## □ The Regulated Articles

**Any Plants, Plant products, Storage places, Packing materials, Conveyances, Containers, Soil and any other Organisms, Objects or Materials that may contain exotic plant pests**

### **Plants**

Living plants and parts there of, including seeds and germplasm

### **Pests**

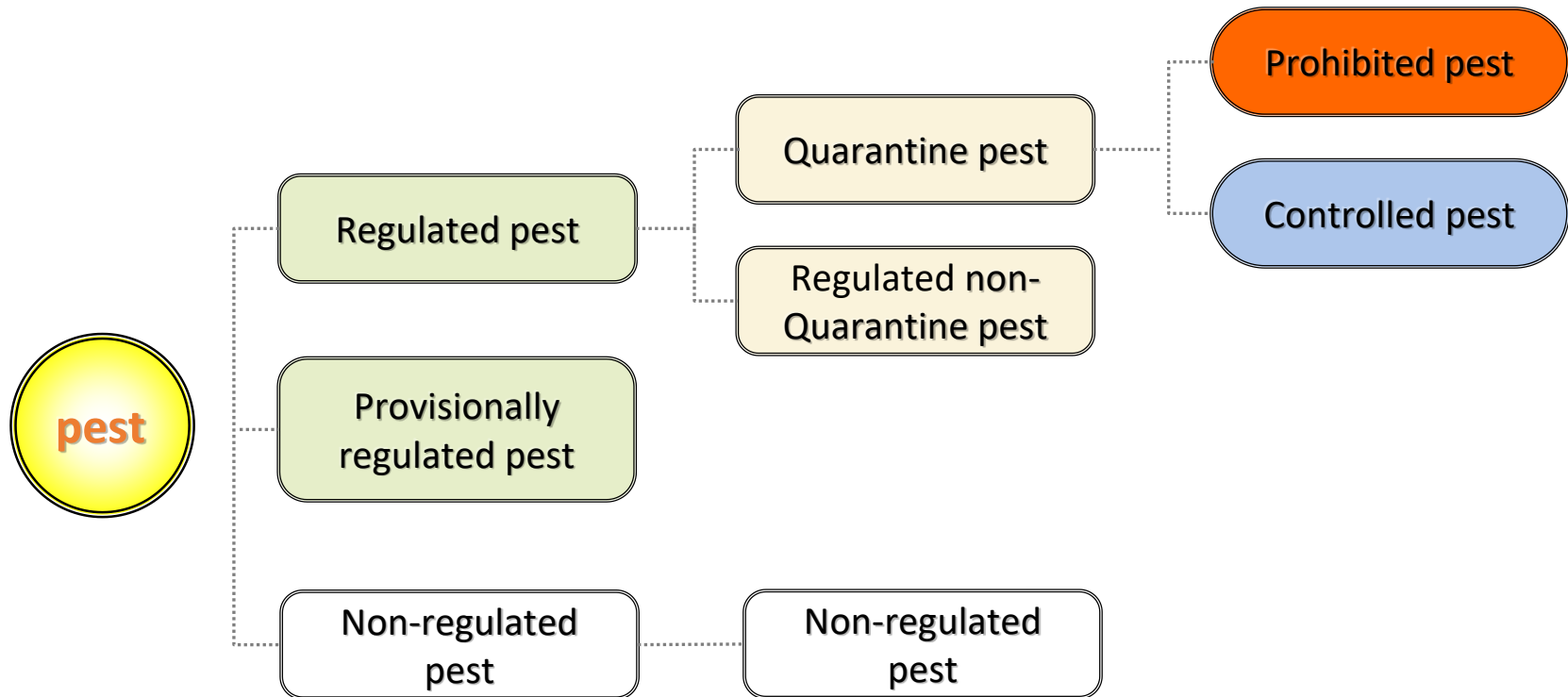
Any species, strain or biotype of plant, animal or pathogenic agent injurious to plants or plant products (insects, weeds, mites, nematodes, viruses, etc)

### **Plant products**

Unmanufactured material of plant origin (including grain) and those manufactured products that, by their nature or that of their processing, may create a risk for the introduction and spread of pests



## □ Pest Management System of Korea





## Regulated pest(Quarantine pest)

- ✓ Pest of potential economic importance to Korea
- ✓ Not present in Korea or present but not widely distributed & being officially controlled
- ✓ **Prohibited Pest**
  - High risk pest such as fruit fly
  - Prohibit host material from areas where the pests are present
  - Destroy or return the consignment to origin when the pest is found during import inspection
- ✓ **Controlled Pest**
  - Other than prohibited pest among regulated pests
  - Disinfect the consignment when the pest is found during import inspection

## Regulated non-quarantine pest

- ✓ Presence in plants for planting affects the intended use of those plants with economically unacceptable impact
- ✓ Regulated within Korea
- ✓ Disinfect when the pest is found at excessive level than allowed

## Non-quarantine pest

- ✓ Widely distributed in Korea and not officially controlled
- ✓ No phytosanitary action even though the pest is found

# **3. Plant Quarantine**

## **- Import Inspection -**

---



# □ APQA inspect...

Plant



- Seed and living plants
- Fresh Fruits and vegetables



- Timber and Lumber


Pest

- Insect, Fungi, Bacteria, Virus
- Pests in Quarantine
  - 1. Regulated Pests
 



1-1. Prohibited  
 Disease 13, Insect 64

1-2. Controlled Pest  
 Disease 477, insect 1544, weed 31
- 1-3. Regulated non-quarantine  
Disease 58, Insect 2, Weed 11
- 2. Provisionally regulated Pests
- 3. Non-quarantine Pests


Soil, WPM, Vessels



- Soil (Prohibited)

- Wood Packaging Material
  - 747 Heat Treatment Company
  - 34 Fumigation Company



- Aircraft & Vessel Inspection

International PQ Accreditation Board for AGM Inspection





## Import Prohibition

### Prohibited plants and plant products

**Host plants and plant products growing in the areas distributed with prohibited pests, and those passing through the relevant areas**

- ✓ Most of tropical fruits, live insects and pathogens
- ✓ Soil & plants contaminated by soil
- ✓ Containers/packaging of prohibited plants

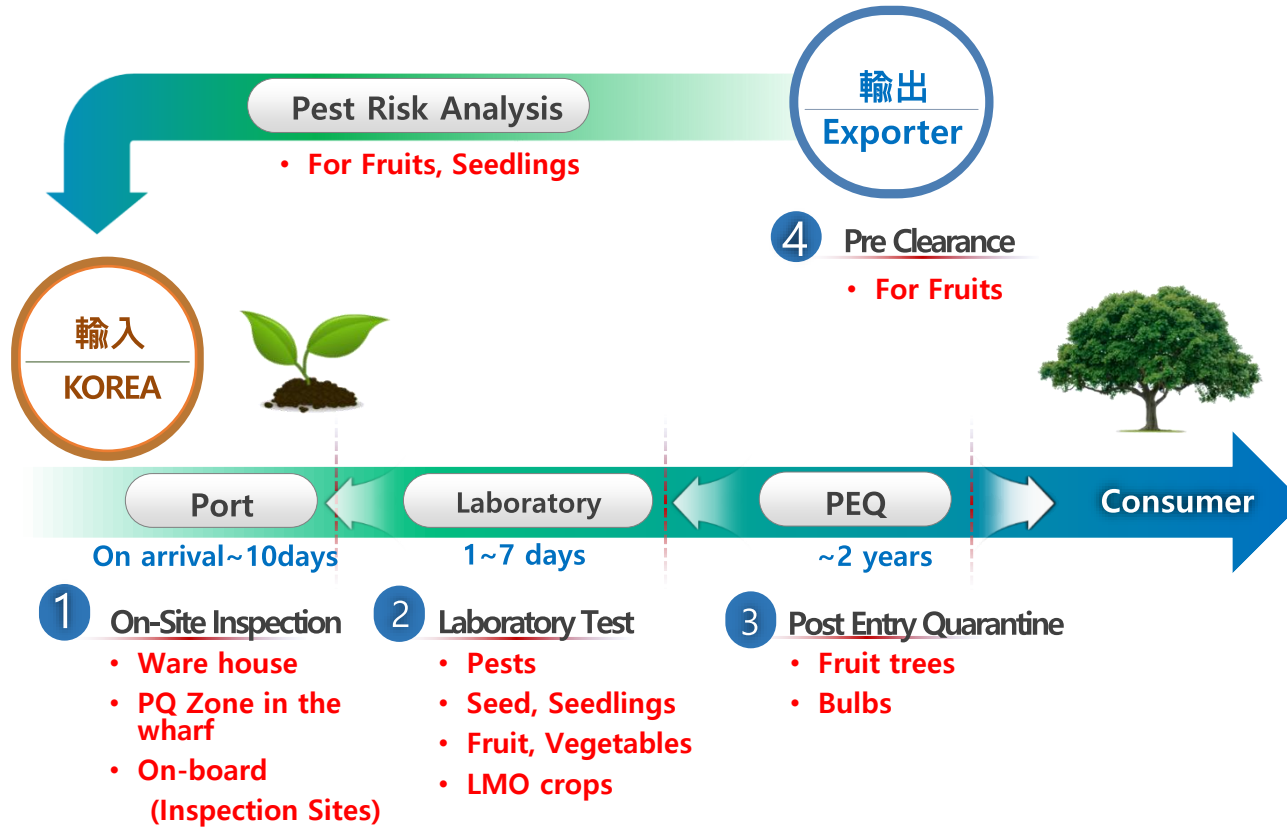
### Special cases of importation of prohibited items

- ✓ Scientific research or international exhibition purpose
- ✓ Exporting country suggests a measure to eliminate the pests & its efficiency is confirmed
- ✓ Pest is imported as a biological control agent





## □ Procedure of Import Quarantine

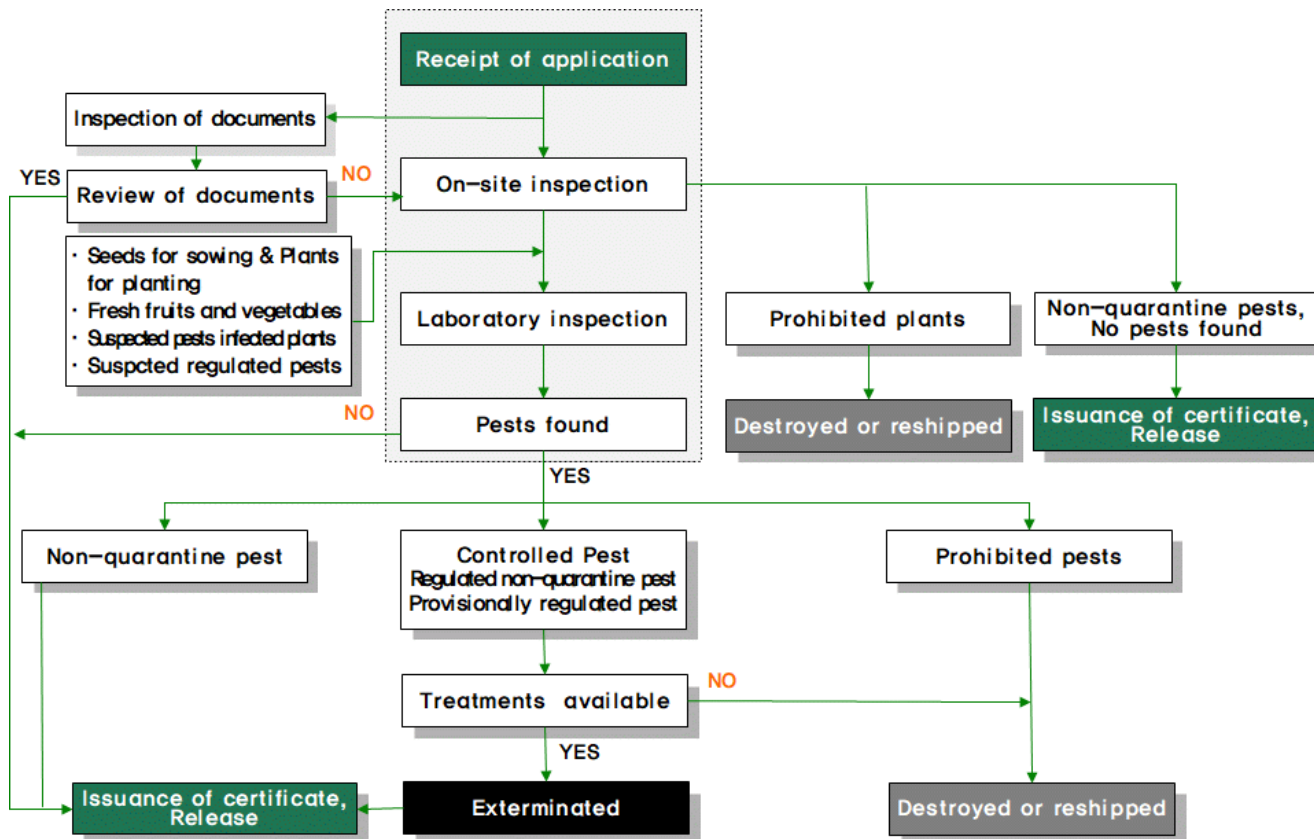




## □ Inspection for Importing Plants

### General Import Inspection Procedures

(On-site inspection, Laboratory & Post-entry Quarantine)





## □ On-site Inspection



- ✓ Done in designated inspection site in port area
- ✓ Requirement for inspection site: **Space, Table, Light, tools**
- ✓ Take samples for laboratory inspection



## Laboratory Test



- ✓ Plants including seeds and seedlings, fruits and vegetables
- ✓ LMO seed crops: **Maize, cotton, pumpkin, carnation & etc.**
- ✓ Fungi, bacteria, virus, mite, nematode, insect, weed etc.



## □ Post-entry Quarantine

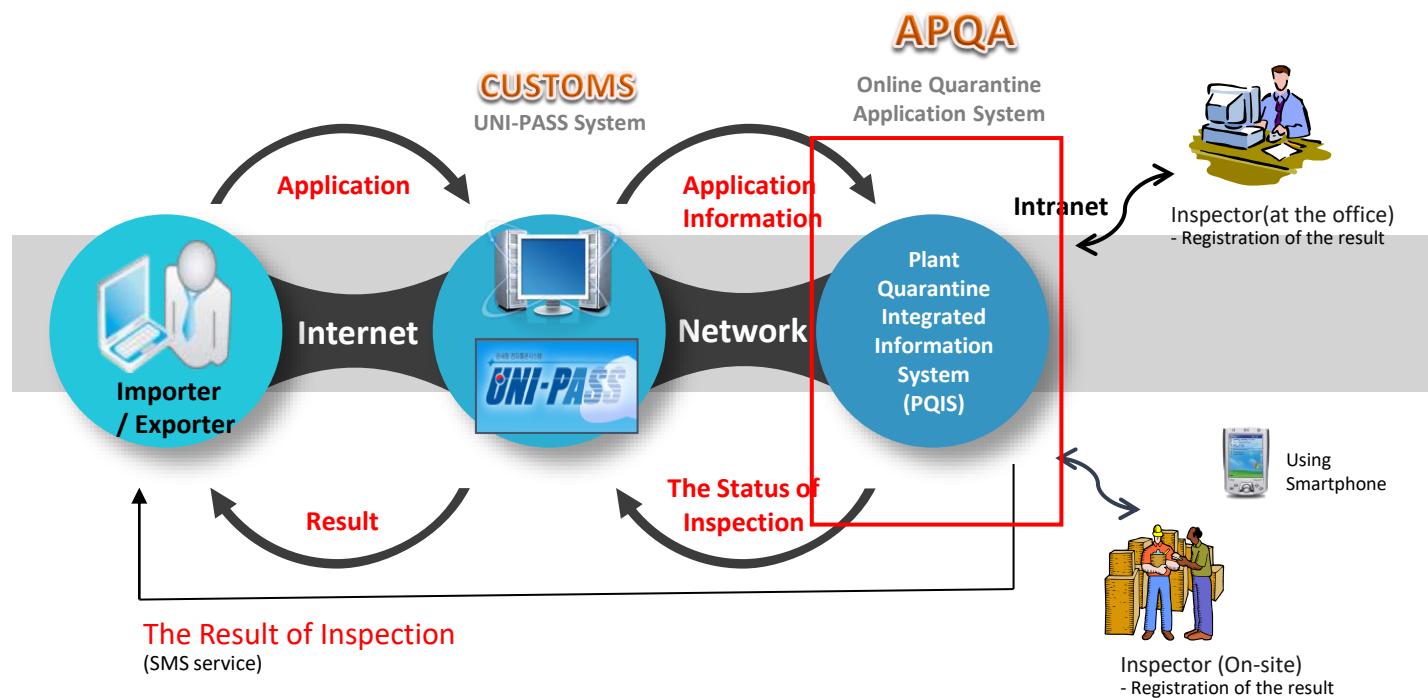
- ✓ 2 national PEQ stations and private facilities designated by APQA
- ✓ Potato tubers, root tubers of sweet potato, strawberry seedlings
- ✓ Nursery stock, cutting, grafts of fruit trees, ornamental cherries, rose
- ✓ Within 1 year





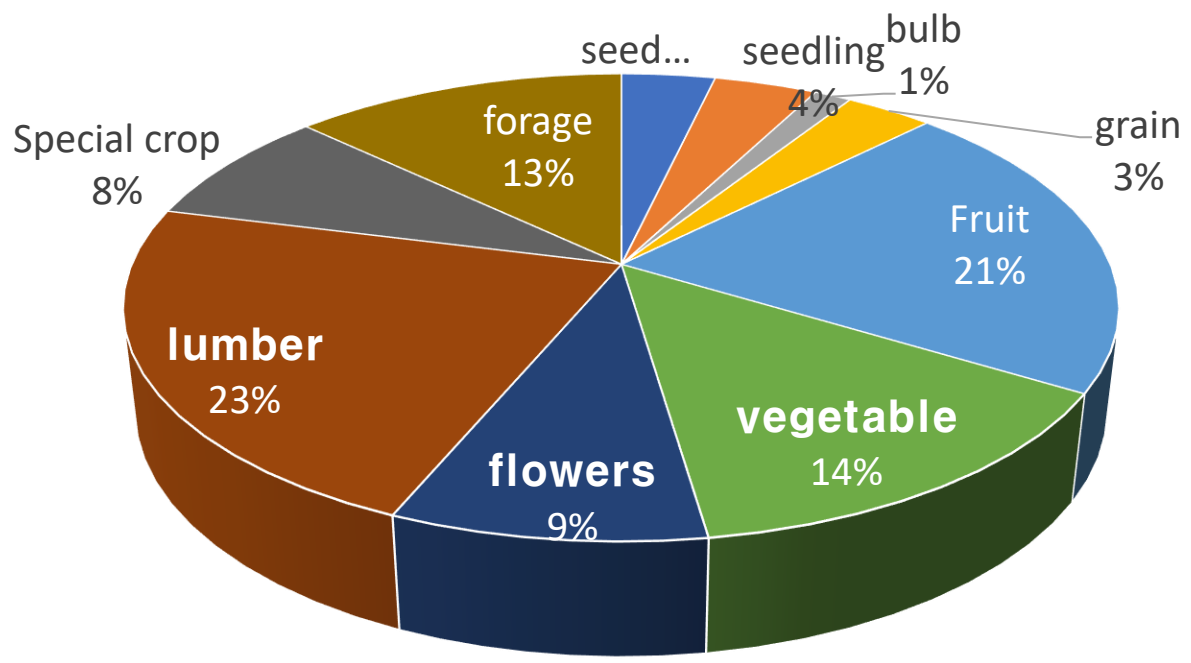
# Establishment of EDI in 1997

(Electronic Data Interchange)





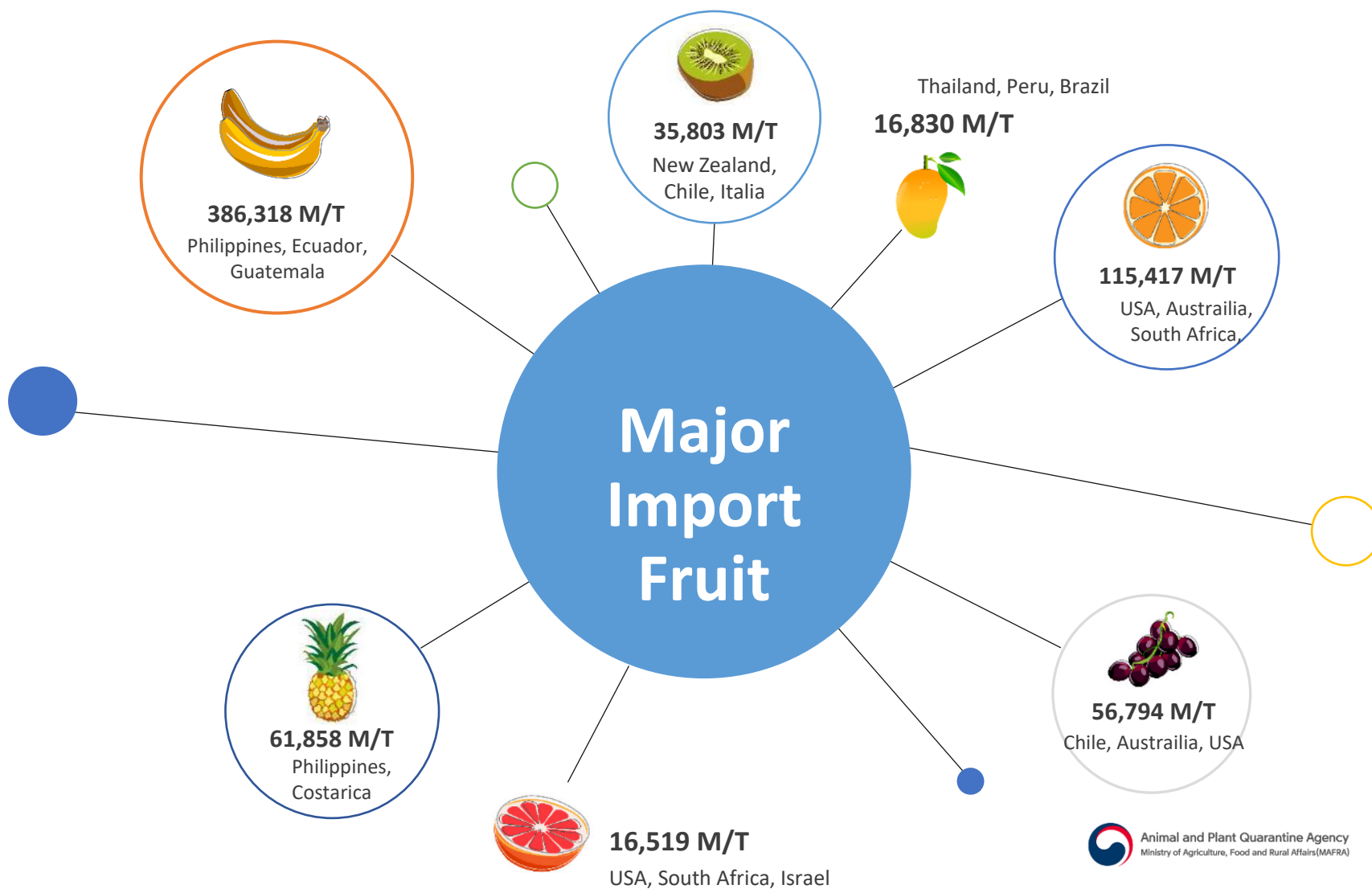
# Ratio of Importing Plants by Group in 2020







## Import of Fresh Fruit(2020)



# **4. Import Risk Analysis(IRA) to Decide Import Permit**

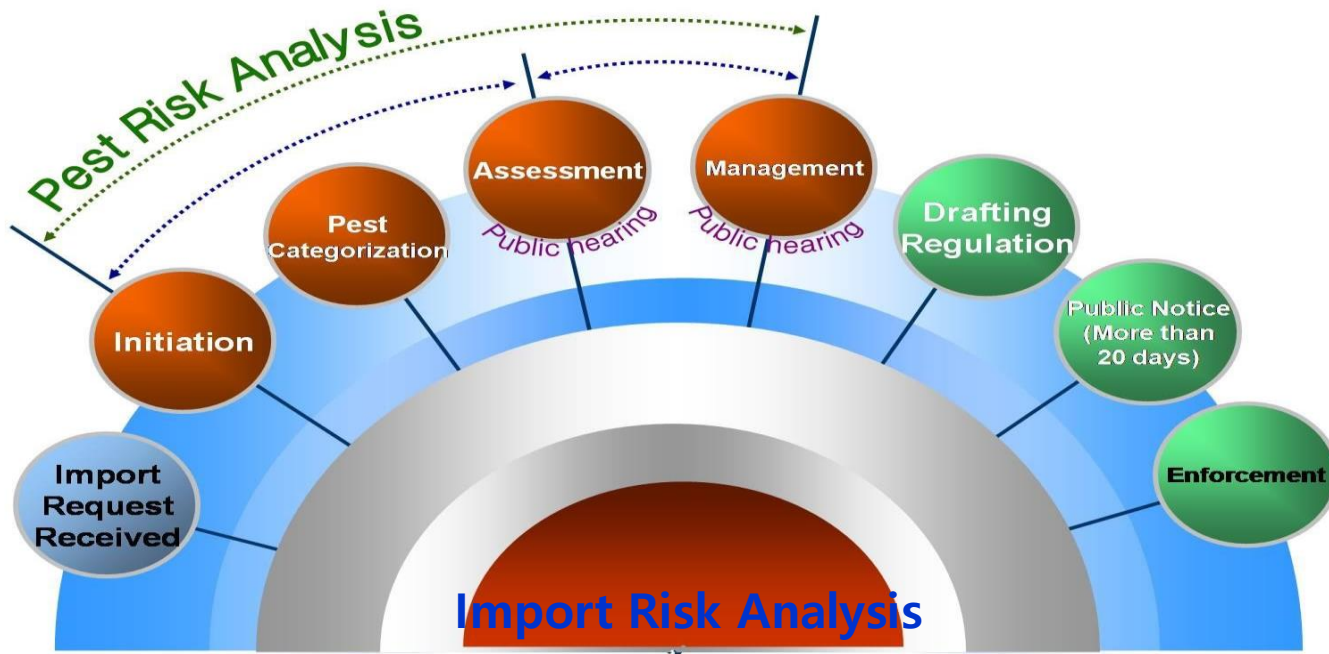
---



## □ Import Risk Analysis(IRA)

### Conduct IRA to;

- Find out pest species associated with proposed commodity
- Assess & analyze the level of risks of the pests
- Provide risk management measures





## □ Import Risk Analysis for a new market access

✓ IRA is the process by which importing authorities determine whether commodity to import in response to requests from exporting country or importer.

- Involves pest risk management that reduce the risk to an acceptable level  
(Necessary to lift a ban on the prohibited plants, especially fresh fruits, vegetables, seedlings)
- IRA consist of 3 major processes (8 specific steps)  
(Initiation → Pest Risk Assessment → Pest Risk Management)
- APQA follows international standard (SPS, IPPC)  
( Ongoing : 214cases on 74 items from 46 countries, '21 May)



## □ Phytosanitary measures for Pest risk management

- ✓ Maintaining Pest free area
- ✓ Pest Free Place of Production and Production site
- ✓ Treatment (Chemical, Cold, Heat, Irradiation)
- ✓ Systems approach
- ✓ Pre-clearance program



UN이 정한  
세계 식물건강의 해  
2020

식물검역은 농림업 생산의 안전과 증진에 이바지하고  
자연환경을 보호하는 것을 목적으로 합니다.

PROTECTING PLANTS,  
PROTECTING LIFE



Food and Agriculture  
Organization of the  
United Nations



농림축산검역본부  
Animal and Plant Quarantine Agency



International  
Plant Protection  
Convention